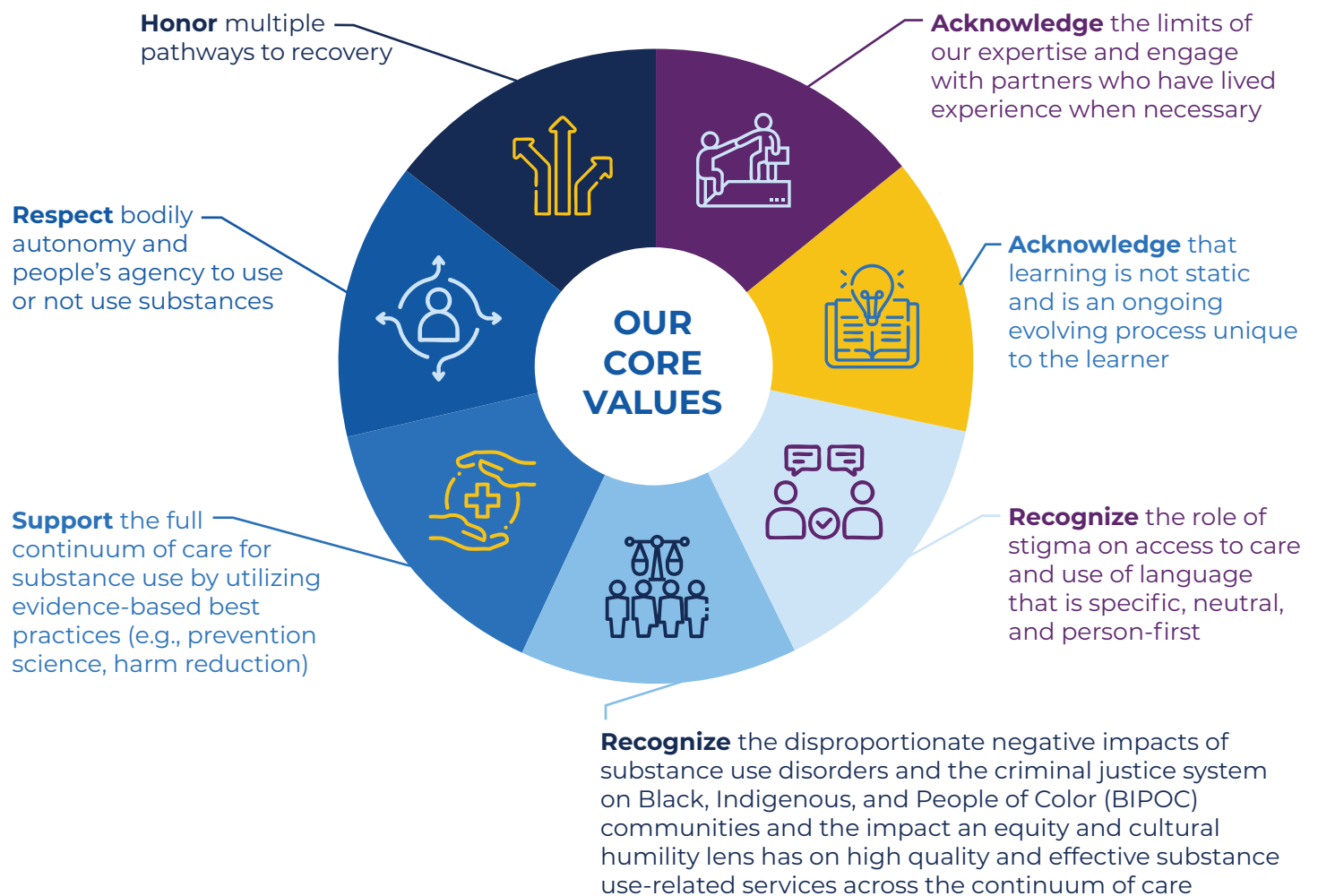


The Center for Excellence on Addiction (the Center) at JSI Research & Training Institute, Inc., is a portfolio of projects that provides support—via expert consultation and training and technical assistance (T/TA) — to communities, practitioners, policymakers, and other partners as they work to address addiction effectively and to reduce alcohol and other drug misuse and related consequences in New Hampshire.

OUR CORE VALUES

Projects and team members of the Center for Excellence on Addiction commit to upholding the following values:



OUR GUIDING PRINCIPLES

Collaborative



- ▶ Engage and collaborate respectfully in mutually beneficial partnerships with the primary population(s) throughout the project period.
- ▶ Strategize meaningfully and respectfully with potential partners.
- ▶ Compensate community partners equitably. Equitable compensation considers the amount of money being paid to community partners and being responsive to the way community partners prefer to receive payment.
- ▶ Build budgets to allow for adequate staff time, subject matter expert services, and community participation.
- ▶ Collaborate and utilize project team member strengths and expertise to ensure work is productive, impactful, and effective.
- ▶ Utilize past/current project resources, tools, and lessons learned to support new scopes of work.
- ▶ Ensure opportunities for external review of resources developed.

Equitable



- ▶ Thoughtfully consider if the scope of work is appropriate for the Center to fulfill based on Center values and New Business Guiding Principles
- ▶ Identify if the project opportunity acknowledges and promotes racial equity, health equity, and/or social determinants of health. If not, how has this been built into the proposed scope of work?
- ▶ Align project roles with staff interest, availability, and expertise.
- ▶ Ensure processes and decisions are transparent and accessible to staff.
- ▶ Ensure that all project team members have access to continuing professional development.

Evidence-Informed



- ▶ Ensure scopes of work recognize and incorporate person-centered language, harm reduction, prevention science, co-occurring and trauma-informed practices and principles. These evidence-informed approaches are examples of ways to address aspects of racial equity, health equity, and social determinants of health.
- ▶ Utilize the expertise of colleagues, external partners, and other resources to complete scopes of work.
- ▶ Actively strive to keep up-to-date on the latest research and evidence through professional development opportunities.